



## SH-DB-W-DECT

AUDIO SECURITY BURGLAR PREVENTING DEVICE



INSTRUCTION MANUAL  
P/N 7103740\_A

### PRODUCT FEATURES

The Crow's SH-DB is a smart wireless Doorbell device with two-way audio. (DECT technology).

Audio is routed over GSM cellular network from the device to the smartphone via Shepherd™ system for audio verification. User can answer to visitor at the door when he is away from home.

Doorbell intercom allows you to talk to SH-AVM (audio verification module) device.

When used with Crow's camera, day and night high definition images will be sent for picture verification.

Answer the door from your phone and speak to visitor in real time. Perfect image gives you a realistic view of your doorstep, while high-quality audio ensures every conversation is clear on both side.

- DECT Universal Standards
- Push-Button for speed dial / send image
- LED indication
- Pairing button
- Can use as an intercom system together with the SH-AVM (while the system is in DISARM mode).
- Receive a call on your smartphone when someone rings your doorbell. (in ARM mode)
- Powered by 2 Lithium batteries Type AA 1.5V
- Low Battery and Supervision events transmission

### PRODUCT OVERVIEW

Front View:



Figure 1

Rear View:



Figure 2

### BATTERY LOCATION VIEW

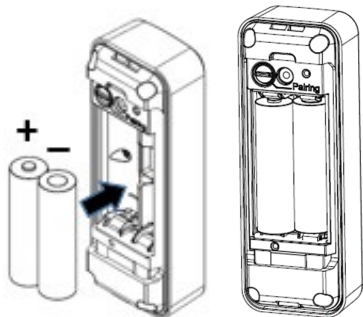


Figure 3

**Batteries must be replaced by  
2 Energizer L91 Lithium batteries AA 1.5V**

**RISK OF EXPLOSION  
IF BATTERY IS REPLACED  
BY DIFFERENT TYPE / MODEL.**

**DISPOSE USED BATTERY  
ACCORDING TO ITS INSTRUCTIONS**

### WALL MOUNTING

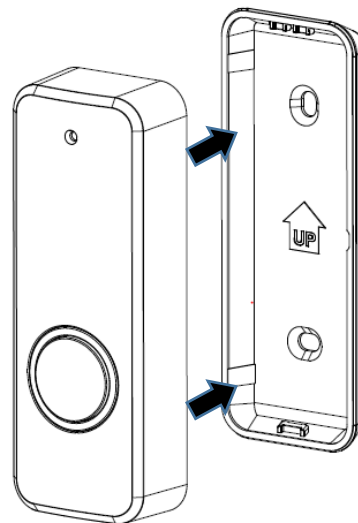


Figure 4

Remove the back cover (see figure 6)  
Use supplied screw to mount the bracket on the wall

Check that the base is flat against the wall to facilitate the unit device insertion into the wall bracket.

### DEVICE VIEW



Figure 5

### PAIRING PROCESS

For pairing process, please refer to your control panel instructions.

**Doorbell pairing, please proceed as follows:**

1. Place the batteries as shown in Figure no. 3
2. Log into web installer interface and go to "Communication level > DECT Learning"
3. Verify DECT is enable state
4. Press and hold the Pairing button on the rear side of the device (figure 2).
5. When the Green button LED in the front starts blinking release the pairing button.
6. While Green LED button is flashing on, Press the button "Learn DECT Device" in communication page.
7. Wait until Pairing Stage 1 & 2 process is starting and ends with successfully learned message.
8. The device is paired in the Control Panel database.

**Doorbell Assignment and configuration setting**

9. Go to "Voice Devices" level and select the desired voice device # 1 to 8, click on **Add Voice device** button, select from the white list paired devices (red color are already assigned) and save configuration.
10. The Doorbell is ready for use

## REMOVE BACK COVER

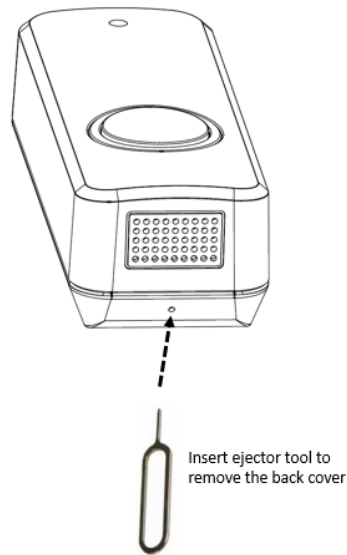


Figure 6

## REGULAR CALL SET UP

The SH-DB can make regular phone call to phone number defined in user level.

Make sure that the Shepherd™ is equipped with SIM card and the GSM option is activated.

- Log into web installer page
- Go to "USER" and select the user who will receive the call
- Fill phone number and Submit the configuration

## WARRANTY POLICY CERTIFICATE

Crow warrants these products to be free from defects in materials and workmanship under normal use and service for a period of 24 months from the last day of the week and year whose numbers are printed on the printed circuit board inside these products.

Subject to the provisions of this Warranty Certificate, during the Warranty Period, Crow undertakes, at its sole discretion and subject to Crow's procedures, as such procedures are from time to time, to repair or replace, free of charge for materials and/or labor, products proved to be defective in materials or workmanship under normal use and service. Repaired products shall be warranted for the remainder of the original Warranty Period.

All transportation costs and in-transit risk of loss or damage related, directly or indirectly, to products returned to Crow for repair or replacement shall be borne solely by the Purchaser.

This Warranty Certificate does not cover products that is defective (or shall become defective) due to: (a) alteration of the products (or any part thereof) by anyone other than Crow, (b) accident, abuse, negligence, or improper maintenance, (c) failure caused by a product which Crow did not provide; (d) failure caused by

## OUTGOING CALLS

The Shepherd™ panel gives you the possibility to contact your permises and initiate full duplex calls to/from the SH-AVM devices or calling from SH-DB device, I addition, SH-DB can trigger camera to send picture.

SH-DB can generate a call in 2 options:

1. **System is in DISARM mode**  
Pressing the Ring button of the SH-DB creates intercom call with all paired and assinged Voice Box.
2. **System in ARM mode**  
Pressing the Ring button of the door bell creates outgoing call to the telephone number programmed in Users level.

**NOTE:** refers to point 2- the # key must be pressed on the phone when receiving call from Door Bell during ARM mode.

### LEDs indication

Status	Green LED	Red LED
Initialization	OFF	Blinking
Registration process	ON	Blinking
Trouble	OFF	Blinking
DECT registration in process	Blinking	OFF
Registration succeed	Constant ON for 3 seconds	OFF
DECT unregister	OFF	BLINKING
Battery cut off	OFF	10 sec; ON
Deactivation	10 sec; ON	OFF

Figure 7

software or hardware which Crow did not provide; (e) use or storage other than in accordance with Crow's specified operating and storage instructions. There are no warranties, expressed or implied, of merchantability or fitness of the products for a particular purpose or otherwise, which extend beyond the description on the face hereof.

This limited Warranty Certificate is the Purchaser's sole and exclusive remedy against Crow and Crow's sole and exclusive liability toward the Purchaser in connection with the products, including without limitation - for defects or malfunctions of the products. This Warranty Certificate replaces all other warranties and liabilities, whether oral, written, (non-mandatory) statutory, contractual, in tort or otherwise.

In no case shall Crow be liable to anyone for any consequential or incidental damages (inclusive of loss of profit, and whether occasioned by negligence of the Crow or any third party on its behalf) for breach of this or any other warranty, expressed or implied, or upon any other basis of liability whatsoever.

Crow does not represent that these products cannot be compromised or circumvented; that these products will prevent any person injury or property

## SPECIFICATION

Modulation Type	DECT Universal Standards
Event Transmission	Voice Call Low Bat Keep Alive (every 7 minutes – configurable)
Activation Method	Push-Button Voice call
Range	500m open space
Battery	2 x Lithium battery L91 Energizer
Current Consumption	Talk Mode: 150mA Average standby current: 50uA
Battery Life :	Up to 4 years
LED Indicators	see Figure 7
Operating Temperature	-10°C – +55°C
Dimensions	112mm x 41mm x 33mm
Weight (incl. battery)	150 gr

## STANDARDS APPROVALS

The SH-DB conforms to the essential requirements set out by:

- RED directive:2014/53/EU
- EMC directive: 2014/30/EU
- Low Voltage directive: 2014/35/EU

Harmonized Standards applicable to this products are:

- EN301489-3
- EN301489-1
- EN301489-6
- EN50130-4
- EN61000-6-3
- EN62368-1
- EN301406

Additional Standards and Directives applicable to this product are:

- RoHS directive: 2011/65/EC



sales@crow.co.il  
support@crow.co.il

[www.thecrowgroup.com](http://www.thecrowgroup.com)



loss or damage by burglary, robbery, fire or otherwise; or that these products will in all cases provide adequate warning or protection.

Purchaser understands that a properly installed and maintained product may in some cases reduce the risk of burglary, fire, robbery or other events occurring without providing an alarm, but it is not insurance or a guarantee that such will not occur or that there will be no personal injury or property loss or damage as a result.

Consequently, Crow shall have no liability for any personal injury; property damage or any other loss based on claim that these products failed to give any warning.

If Crow is held liable, whether directly or indirectly, for any loss or damage with regards to these products, regardless of cause or origin, Crow's maximum liability shall not in any case exceed the purchase price of these products, which shall be the complete and exclusive remedy against Crow

These instructions supersede all previous issues in circulation prior to March 2021